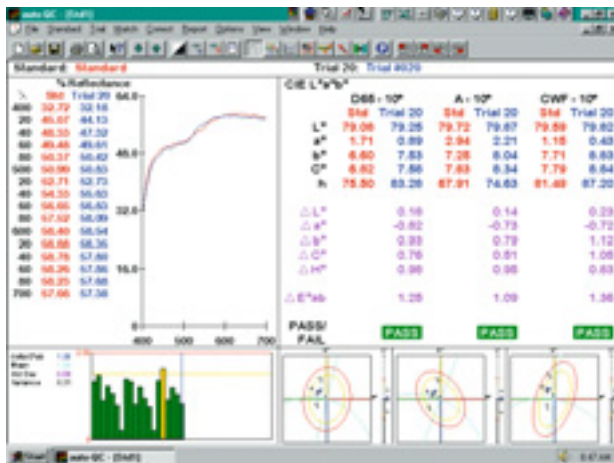


color-view

The color-view spectrophotometer is a highly reliable 45/0 instrument with circumferential illumination. It is designed to measure rough, directional surfaces, pellets or powdered materials like plastic concentrates and resins, and smooth uniform surfaces like paint draw-downs and sprayouts, all with the same degree of certainty.

- Compact size takes up less bench space
- Guaranteed repeatability through a patented self-calibration
- No color changes due to temperature or light exposure because of rapid measurement and cool measurement port
- Built-in retroviewer provides easy sample positioning
- Variety of samples can be measured with interchangeable apertures: 4, 11, 32 mm
- Powders, slurries and pellets are easily measured with a glass sample cup
- Built-in 60° gloss option allows simultaneous measurement of gloss and color
- auto-QC software included



auto-QC
Windows® Based Color QC Software

- User defineable screen layouts and print-outs
- Easy creation of macros to simplify routine procedures
- Manual and automatic tolerance settings
- Powerful, built-in Access® database for any search routine needed
- Exports data to common Windows® spreadsheet programs



For more information on auto-QC see pages 74 - 76.

Training color-view

BYK-Gardner offers you more than just an instrument. We assist you in analyzing your color readings, understanding how to set tolerances and as a result be able to use the color-view to save time and money and at the same time improve your quality. Therefore, the instrument comes with a full day training course including:

Color Theory

- The building blocks of color: illuminant, observer, object
- Color differences with interpretation

Operation and Software Training

- Measure samples and standards by single and average readings
- Save, recall and delete measurements
- Change illuminants, observers, color scales
- Define tolerances for pass/fail: manual input or automatic calculation based on accepted production trials

Ordering Information

Cat. No.	Description
E-6501	color-view
E-6502	color-view with gloss
E-6503	color-view
E-6504	color-view with gloss
EE-6501	Extended Warranty one year additional

Comes complete with:

color-view
 auto-QC color control software
 Calibration puck including white opal with certificate and black glass
 Green checking reference
 Large aperture 32 mm (1.26 in)
 Power cable
 Serial cable for PC connection
 Spare lamp, spare fuse
 Operating instructions
 Training

Data Analysis

- Standard reports: Color Plot - Spectral Plot - Tolerance Plot - Statistical Chart
- Define custom specific reports
- Data export to Excel® for further analysis

Additional Features

- Define macros to combine individual software steps
- Define different user levels

Standards

ASTM	D 2244	E 308	E 1164
DIN	5033	5036	6174
ISO	7724		

Technical Specifications

Voltage	60° Gloss
230 V	-
230 V	yes
115 V	-
115 V	yes
Geometry	45/0 circumferential
Spectral Range	380 - 720 nm
Spectral Interval	10 nm
Repeatability	0.01 ΔE^* , 1 σ^1
Reproducibility	0.1 ΔE^* , 1 σ^2
Illumination	Tungsten Halogen Lamp
Operating Temperature	+10 °C to +42 °C (50 °F to 110 °F)
Humidity	5% to 85% (non-condensing)
Dimensions	273 x 162 x 381 mm (10.8 x 6.4 x 15.0 in)
Weight	11.1 kg (24.6 lbs)

¹300 consecutive measurements on white tile

²average on 12 BCRA II tiles

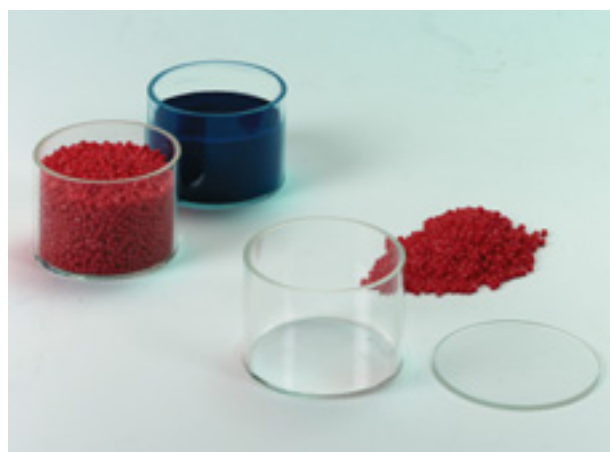
Color Measurement of Plastic Pellets

To measure granular materials like plastic pellets, care must be taken to achieve repeatable results. BYK-Gardner offers two solutions for sample presentation.

Sample Cup

The sample cup allows easy measurement of pellets, powders and slurries. For precise and repeatable results the sample aperture must be replaced by the glass plate at the time of calibration. Additionally, it is recommended to average at least 3 readings by refilling the cup each time.

To eliminate the influence of ambient light, the black sample cup cover can be used.



Ordering Information

Cat. No.	Description
E-6135	Glass Sample Plate
E-6136	Glass Sample Cup
E-6245	Sample Cup Cover

Technical Specifications

Diameter
60 mm (2.4 in)
60 mm (2.4 in)



Sample Rotator

For the first time it is possible to repeatably measure pellets with minimal operator sample handling. The sample rotator is an automatic device that is attached on top of the color-view. It uses a rotating system that is powered by the instrument. As the sample container is turning over a defined time period, refilling becomes obsolete.

- Saves sample preparation time
- Frees up personnel for other important tasks
- Improves repeatability and reproducibility

Ordering Information

Cat. No.	Description
E-6505	Sample Rotator Upgrade (for color-view with serial number < 90003001)
E-6510	Sample Rotator Accessory (for color-view with serial number ≥ 90003001)

Comes complete with:

Rotator, glass sample plate, sample container with teflon lining, sample container lid, calibration aperture

Note: color-view instruments to be used with the sample rotator need to be modified. Please specify at time of purchase. To upgrade existing instruments, please contact your local service department.

Ordering Information

Cat. No.	Description
E-6135	Glass Sample Plate
E-6506	Sample Container
E-6507	Sample Container Lid
E-6508	Teflon Lining
E-6509	Calibration Aperture



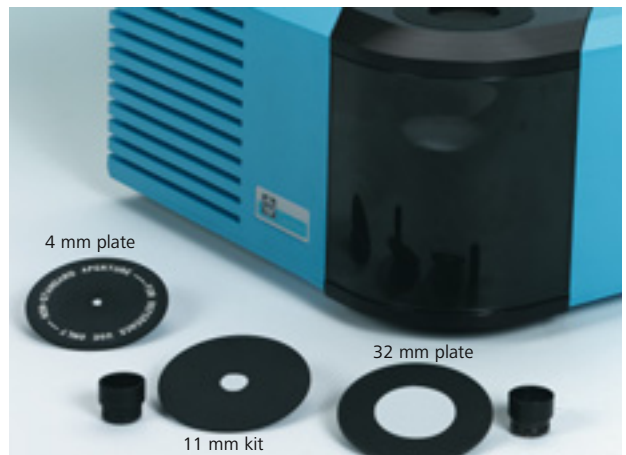
Measurement Aperture

color-view allows easy interchanging of measurement apertures, beneficial for measuring a wide range of sample sizes. A small aperture should be used for small parts or homogeneous surfaces. The large aperture is best for larger components or non-homogeneous surfaces.

Ordering Information

Cat. No.	Description
E-6521	Aperture Kit* 11 mm (0.43 in)
E-6523	Aperture Plate 32 mm (1.26 in)
E-6522	Aperture Plate 11 mm (0.43 in)
E-6520	Aperture Plate 4 mm (0.16 in)

* Includes: aperture plate and optics



Replacement Standard

Calibration Puck

- Holds black and white calibration tiles
- Certificate of traceability for white opal

Ordering Information

Cat. No.	Description
E-6525	Calibration Puck



For Recertification
and Calibration
Services
see page 170.

Replacement Lamp

The color-view uses a tungsten halogen lamp which has an expected lifetime of 8,000 hours. For accurate readings it is recommended to change the lamp at least once a year.

Ordering Information

Cat. No.	Description
E-6524	Tungsten Halogen Lamp